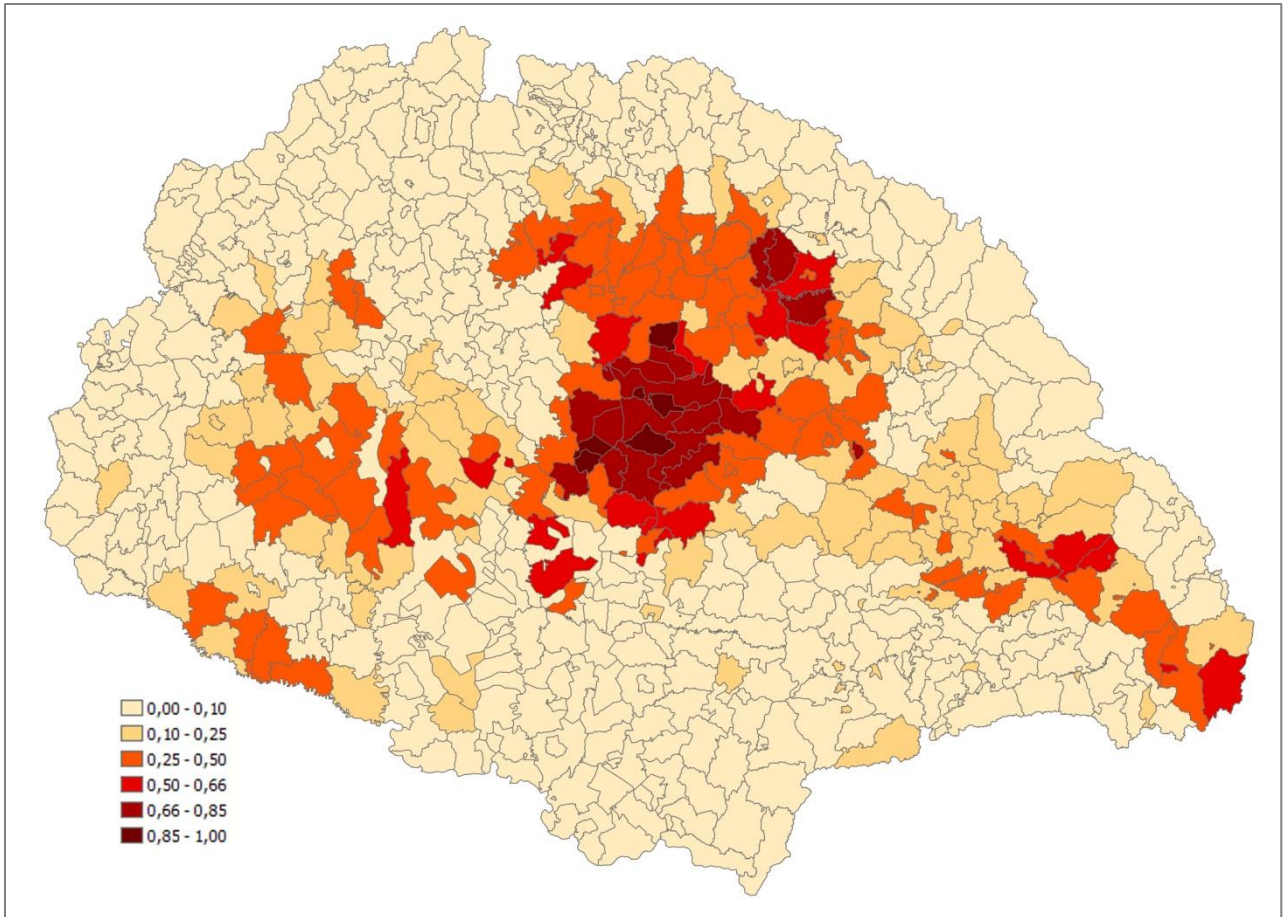
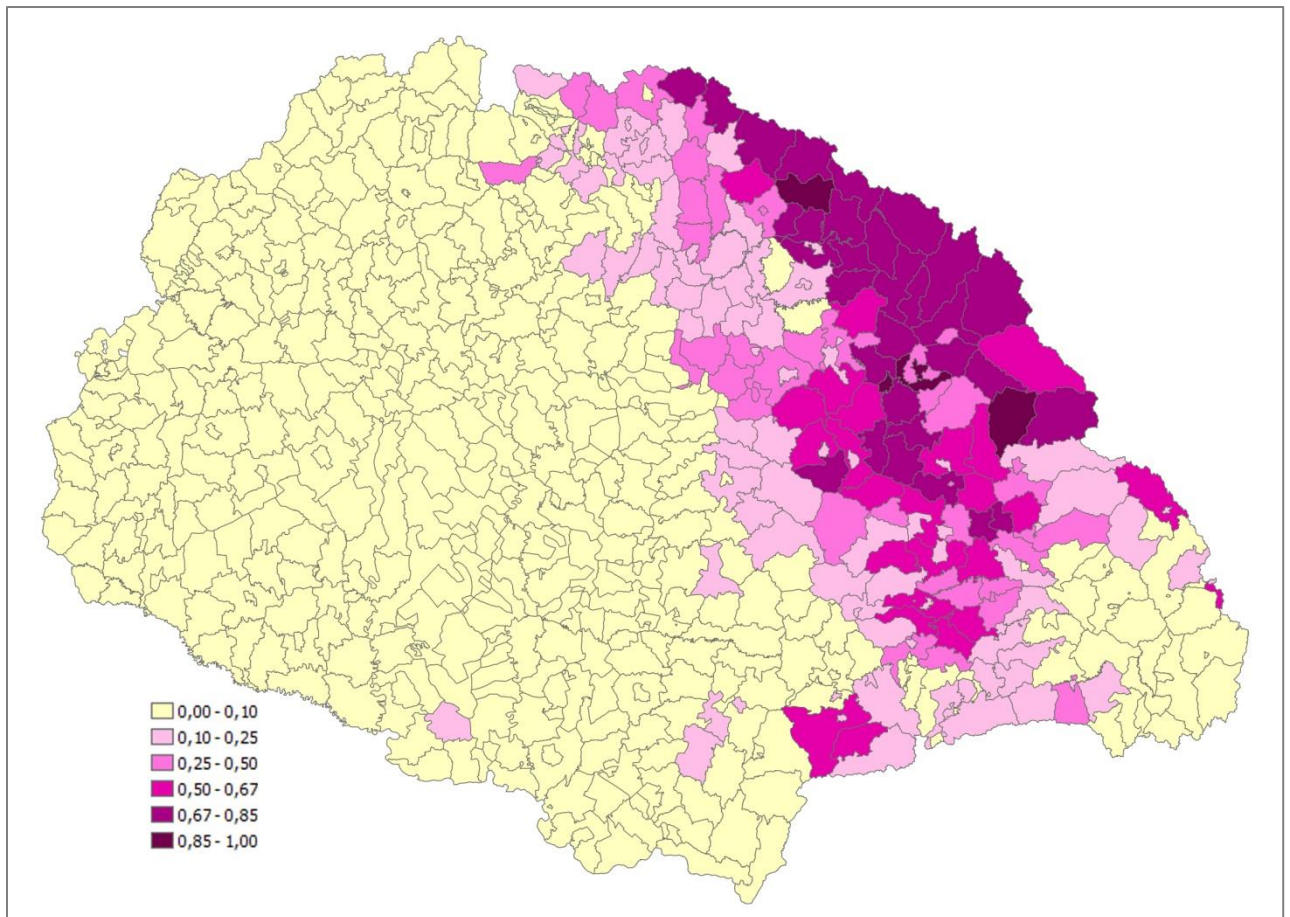


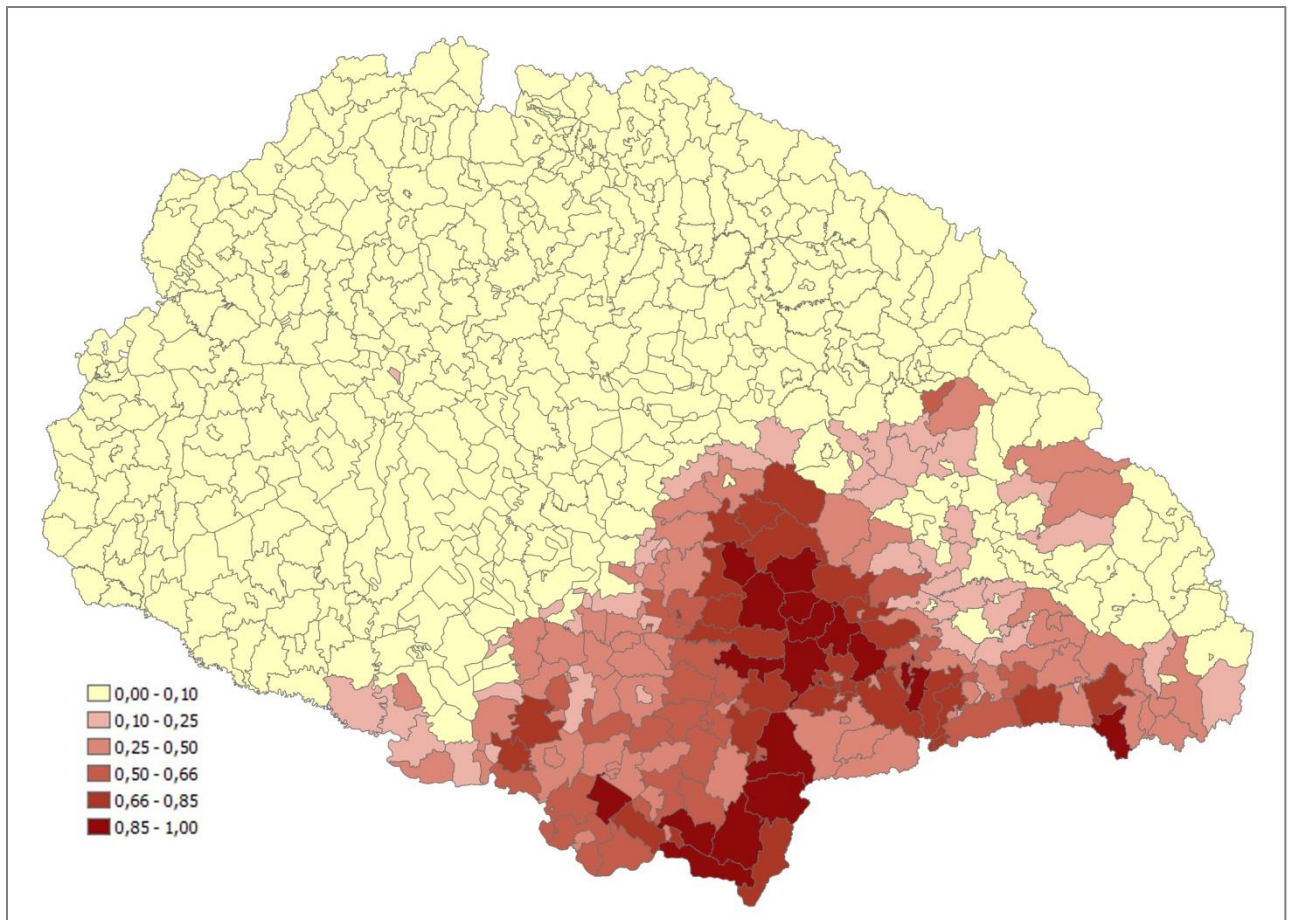
A római katolikusok járásonkénti aránya, 1910 / Proportion of Roman Catholics in districts, 1910 (1 = 100%)



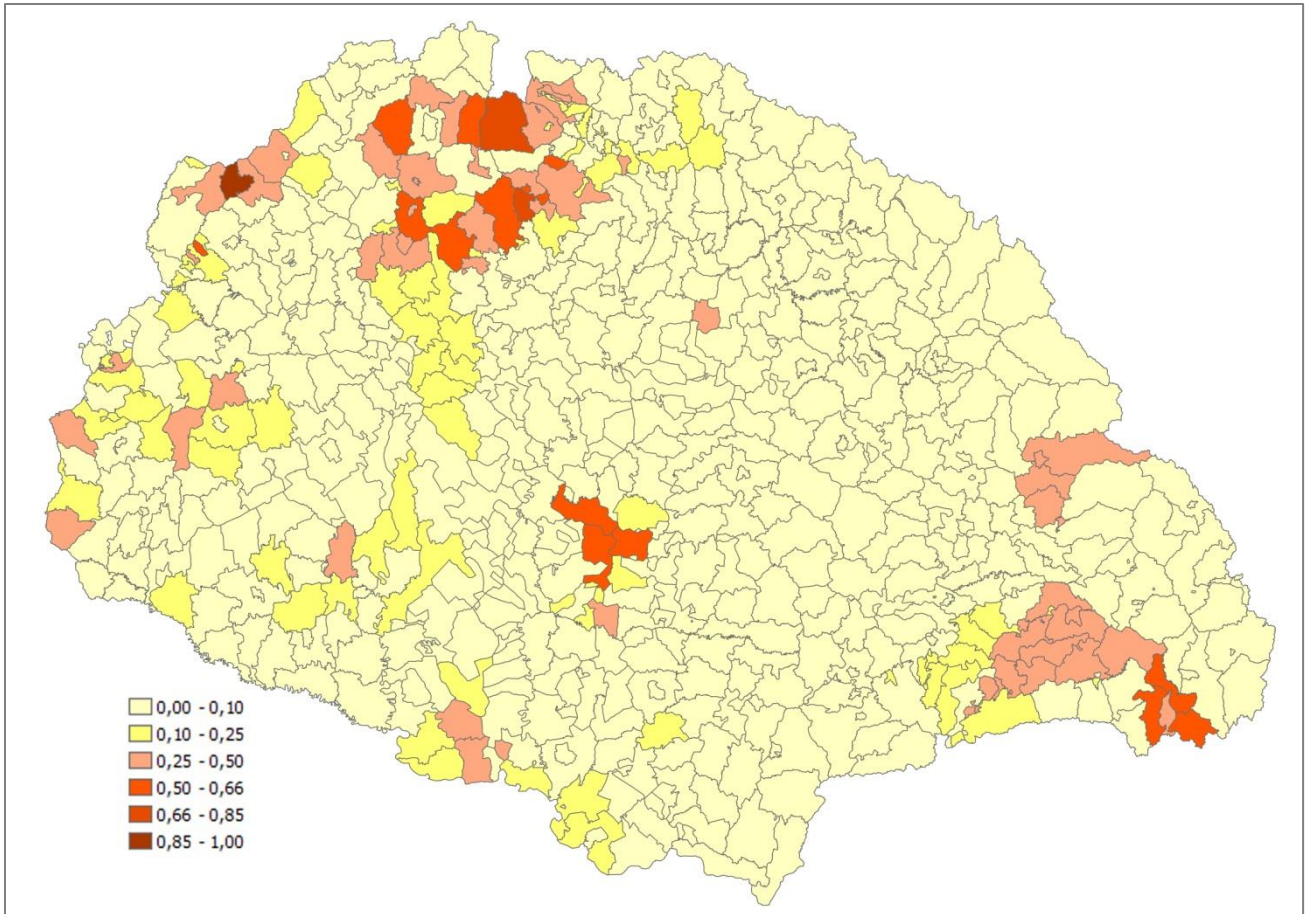
A reformátusok aránya járásonként 1910-ben / The proportion of Calvinist population in districts, 1910



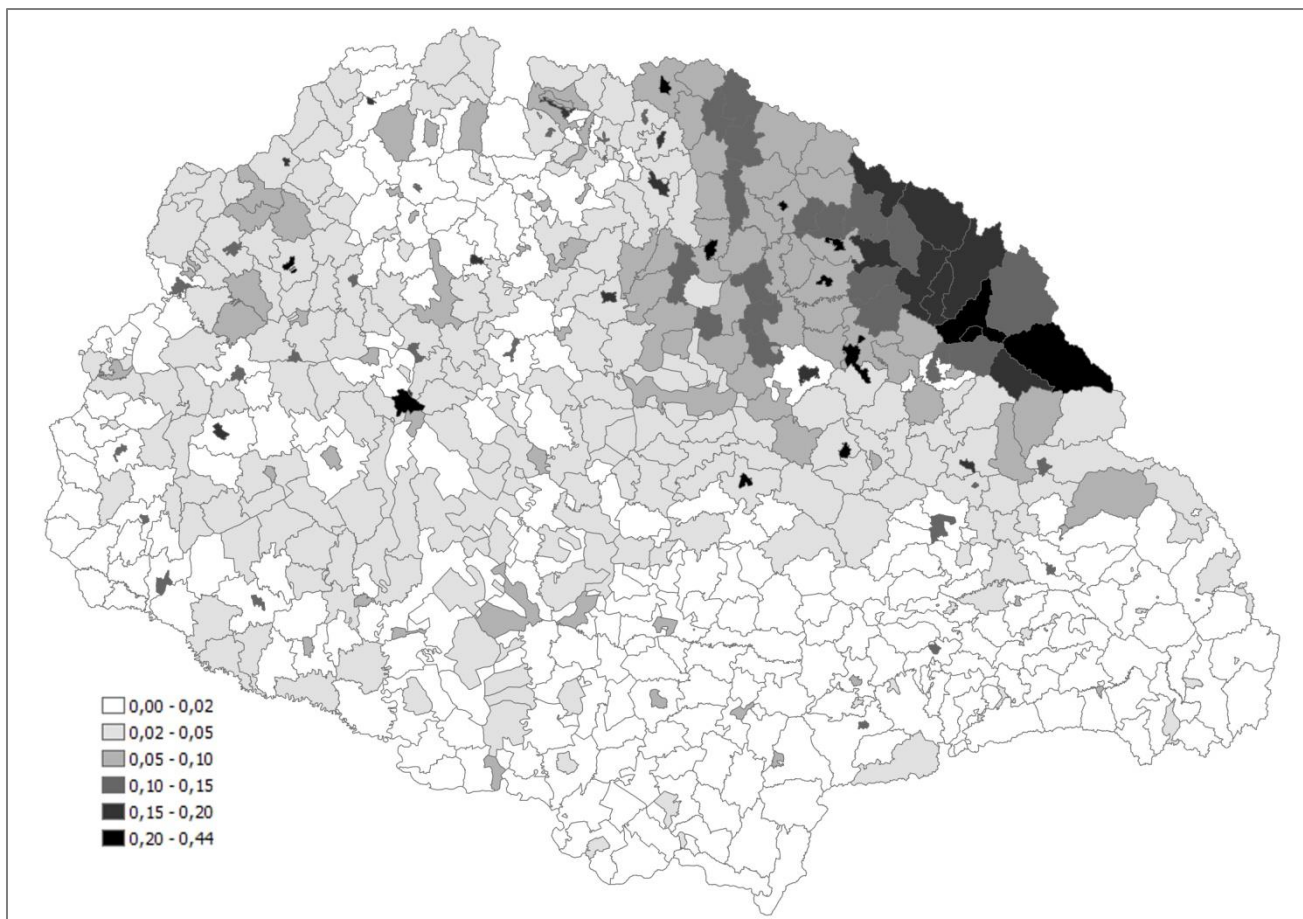
**A görög katolikus lakosság megoszlása járásonként / Proportion of Greek Catholics in districts, 1910
(1=100%)**



Az ortodox lakosság aránya járásoként, 1910 / The proportion of Orthodox population in districts, 1910



Az evangélikusok aránya járásoként 1910-ben / The proportion of Lutherans in districts, 1910 (1 = 100%)



A zsidóság aránya járásonként 1910-ben / The proportion of Jews in districts, 1910 (1 = 100 %)